

## RAIL END CAPS (Heavy Duty, Standard, Lite)

Dual Rack Rail End Caps are designed for Light, Standard, & Heavy Dual Rack Rails. End Caps button up DR mounting systems for a finished appearance while protecting against the collection of water and debris inside and protecting rail edges. the rail. Available in black or white PVC and come with 1 year warranty.

## ADVANTAGES

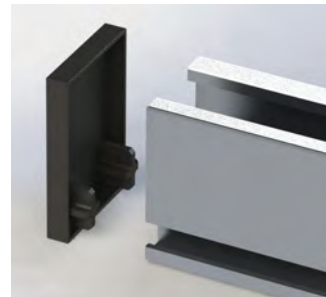
- Simple Install. Just Slide into rail end
- No tool needed for installation
- End caps install in seconds.
- Available for the complete line of DR rails, end caps provide a streamlined look and are made out of black or white PVC.

### Product Line

Item #	Product Name
DR-CSEC-01	Standard Rail End-Cap - Clear
DR-CSEC-02	Lite Rail End-Cap - Clear
DR-CSEC-03	Heavy Duty Rail End-Cap - Clear
DR-BSEC-01	Standard Rail End Cap - Black
DR-BSEC-02	Lite Rail End-Cap - Black
DR-BSEC-03	Heavy Duty Rail End-Cap - Black

### Installation Guide

For detailed instructions please refer to the Dual Rack installation guide



1. Align the bottom teeth of the End Cap with the opening rail grooves.



2. Apply pressure to create a snug fit between the End Cap and the mounting rail.

\*DualRack Rail in pictures, sold separately

## Contact Info



**Dual Rack Inc.**  
 2290 Agate ct. Unit A-B, Simi Valley, CA, 93065  
[www.DualRack.net](http://www.DualRack.net)  
 Email: [info@DualRack.net](mailto:info@DualRack.net)  
 Phone: +1 (805) 254 - 2250